



CHIAPRT

Centre for Health in All Policies
Research Translation

ANNUAL REPORT 2025

Centre Affiliated Partners



Project Partners



The Centre for Health in All Policies Research Translation acknowledges the Kaurna people - the traditional custodians of the Adelaide Plains. We recognise and respect their cultural, heritage, beliefs, and relationship with the land. We acknowledge that they are of continuing importance to the Kaurna people living today and we pay our respects to their elders past, present, and emerging.

Table of Contents

Introduction

| | |
|---------------------------------|---|
| 2025 at a Glance..... | 4 |
| Director's Message..... | 5 |
| The CHiAPRT Team..... | 6 |
| CHiAPRT Advisory Committee..... | 7 |
| CHiAPRT Impact Evaluation..... | 8 |
| Strategic Outcomes..... | 9 |

Research Translation

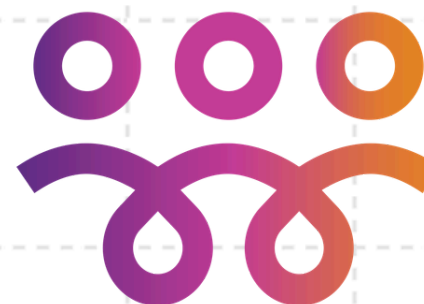
| | |
|--|----|
| HEAL Network..... | 11 |
| 2025 Future Leaders School..... | 11 |
| HEAL Network Case Study Compendium..... | 12 |
| FAME Sustainability Grant..... | 13 |
| Greenspace Decision-Making Tool Prototype..... | 13 |
| Preventive Health SA..... | 14 |
| Office for Ageing Well..... | 15 |
| Health Promotion Journal of Australia..... | 15 |
| Research Policy Partnerships Masterclass..... | 16 |
| Testimonies..... | 17 |
| Research-Policy Translation Community of Practice..... | 18 |
| Translating research for local impact..... | 18 |
| Boundary Spanning..... | 19 |
| ORSR Sport Voucher Program..... | 20 |
| CHiAPRT Fame Showcase..... | 20 |
| In Conversation Roundtable..... | 21 |

Social Determinants of Health

| | |
|---|----|
| Green Equity..... | 23 |
| SPARK - Loneliness Project..... | 24 |
| Second Global Survey of HiAP..... | 24 |
| Indigenous Health in All Policies..... | 25 |
| WHO Collaborations..... | 26 |
| Challenging Economic Assumptions Podcast..... | 27 |
| 2025 Episodes..... | 28 |

CHiAPRT Outputs

| | |
|----------------------------------|----|
| CHiAPRT Communications..... | 30 |
| Conferences & Presentations..... | 31 |
| Publications..... | 32 |
| Resources..... | 33 |



2025 at a Glance

2

In Conversation
Round Table
Webinars



1,178 views
491 downloads

Journal
Publications

47,532 views
165 citations



35,469 impressions
1,017 followers



1,107 streams
and downloads



3 Challenging
Economic
Assumptions
Podcast
Episodes



9

Reports and
Factsheets
Created



Approaching
our
5-year
anniversary!

Another
successful
Research Policy
Partnerships
Masterclass!

Community
of Practice
Workshops



4

13
Journal
Publications



Director's Message



Associate Professor Carmel Williams

It has been another productive year at the Centre for Health in All Policies Research Translation. During 2025, the Centre has continue to grow and strengthen, working together with partners to deliver on shared priorities – such as acting on the social determinants of health and health equity and accelerating the translation of research into policy, practice and impact.

CHiAPRT was established in February 2021, and with the Centre now nearly five years old, it seemed timely to reflect on its beginnings and original purpose and consider how the work of the Centre has contributed to the research translation and prevention landscape.

We commissioned Dr Tahna Pettman, a leading prevention and knowledge translation research expert, to guide us through an impact evaluation. A summary of the key messages from the Tahna's Impact Evaluation can be found in the pages of this year's Annual Report. We will be drawing heavily on the Evaluation's findings and insights from the Centre's Advisory Committee to draft CHiAPRT's next 5-year Strategic Plan for 2026-2031. We hope to have this available to share in the second quarter of 2026.

The Centre continues to work closely with the research, policy making, and practice communities to plan and deliver a diverse range of projects. These projects strengthen the use of evidence in policy, build system capacity, and create partnerships to deliver impact. The Annual Report shares highlights of these projects.

In 2025 the Centre was delighted to be part of two successful Category 1 grants; the STAUNCH Grant, with a focus on strengthening Indigenous Nation Building, and the Spark Grant, which aims to build community capacity to address loneliness. Being part of these important research projects reinforces the Centre's value in the research translation and prevention community. More details about these projects can be found in the pages of this report.

Respectful partnerships underpin the Centre's approach, and the Annual Report provides a snapshot of the multiple partners engaged with the Centre's program of work.

The Centre continues to be supported by a small but capable project team working hard to progress the Centre's priorities. It is pleasing to report that the team has again expanded in 2025, with the Centre welcoming Jacquelyn Fyfe, Courtney Bishop, Linh Nguyen, Isaac Vann, and Anmol Williams to join Carmel, Yonatal, and Mija. I want to thank the entire team for their dedication, professionalism and support.

The CHiAPRT Team

Overview

CHiAPRT continued to grow and evolve as an organisation in 2025, with the team significantly expanding in expertise and members.

A mobile and dynamic team, CHiAPRT works through a combination of core centralised staff and project specific members from a variety of disciplinary backgrounds and perspectives. CHiAPRT staff are employed on a range of bases, from one day a week to full time, with this diversity and flexibility supporting the Centre in staying responsive, productive, and effective, and ensures it is consistently working towards its underlying aims and goals.



CHiAPRT Team Members at 2025 End of Year Lunch



Carmel



Yonatal



Mija



Jacqualyn



Linh



Courtney



Clare



Anmol



Isaac



Neha

CHiAPRT Team Members

Carmel Williams | Director

Yonatal Tefera | Senior Research and Policy Fellow

Mija Coad | Project Support and Communications Officer

Jacqualyn Fyfe | Project Support Officer

Linh Nguyen | Project Support Officer

Courtney Bishop | Research Officer

Clare Murphy | Research Officer

Anmol Williams | Research Officer

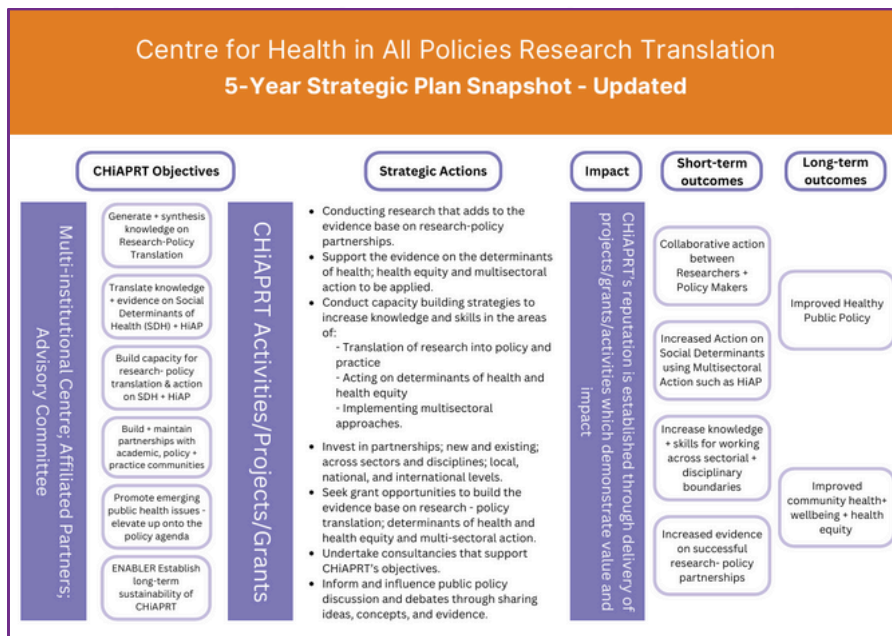
Isaac Vann | Research Officer

Neha Lalchandani | Consultant

CHiAPRT Advisory Committee

Overview

The Advisory Committee provides strategic advice and guidance to CHiAPRT and helps inform and shape CHiAPRT's strategic directions and work plans. The Members of the Advisory Committee work to ensure that CHiAPRT engages widely and that the work of CHiAPRT is informed by, and remains relevant to, its partners and key stakeholders. This includes co-designing strategic guidance documents with CHiAPRT and consulting on key decisions and goals.



2020-2025 CHiAPRT 5-Year Plan Strategic Snapshot

Advisory Committee Members

Chair: Prof Ian Goodwin-Smith | Flinders University SA

- **A/ Prof Carmel Williams | CHiAPRT**
- **Dr Yonatal Tefera | CHiAPRT**
- **Tom Symonds | Health Translation SA**
- **Dr Catherine McKenzie | Flinders University SA**
- **Prof James Smith | Flinders University NT**
- **Prof Sotiris Vardoulakis | HEAL Network**
- **Bev O'Brien | City of Salisbury**
- **Prof Fran Baum | University of Adelaide**
- **Dr Connie Musolino | University of Adelaide**
- **Dr Clare Hume | University of Adelaide**
- **Prof Tracy Merlin | University of Adelaide**
- **Prof Veronica Soebarto | University of Adelaide**
- **Marina Bowshall | Preventive Health SA**
- **Dr Alanna Sincovich | Preventive Health SA**
- **Dr Rebecca Tooher | SACOSS**
- **Julie Williams | Department of Health, Tasmania**
- **Kathy Williams | Office for Ageing Well**
- **Sonny Lee | Commission of Public Sector Employment**

The Advisory Committee has guided CHiAPRT through its first five years and has evolved over time. As part of this, membership is dynamic and ever-changing, and CHiAPRT would like to extend their appreciation to all members. In particular, CHiAPRT would like to recognise the efforts and accomplishments of Wendy Keech, who stepped down as Advisory Committee Chair in 2025, and welcome Ian Goodwin-Smith as the new Chair.

CHiAPRT Impact Evaluation

Initially established in February 2021, over the course of its time CHiAPRT has strived to **strengthen research-to-policy translation** and multisectoral action across policy and research, promote and establish Health in All Policies as a governance model locally and globally, and ultimately, work to **improve the social determinants of health and health equity**.

Impact Evaluation

In 2025, Dr Tahna Pettman conducted a mixed-methods impact evaluation to map and review CHiAPRT's activities and impact over its first five years and assess its influence.

Utilising a logic model and theory of change, this impact evaluation found:

- CHiAPRT is recognised as a unique catalyst for research-policy translation, locally and globally, with strong contributions in capacity building (e.g., Masterclass), co-produced WHO resources, and strategic research agendas and collaborative research.



CHiAPRT Impact Evaluation

- Strengths include trusted partnerships, convening and boundary-spanning capacity, thought leadership, and innovative resources and tools.
- CHiAPRT's diversity and agility are valued aspects of the Centre's identity and function, and are important elements to maintain.
- Stakeholders emphasised CHiAPRT's role in holding space for collaboration, influencing policy discourse, and championing HiAP in practice, not only ambition.
- CHiAPRT has the opportunity to strengthen its position by expanding into interstate and international spheres, further developing and expanding the team, and broadening its priority areas.

Next five years

In 2021, CHiAPRT developed a 5-Year Strategic Plan to guide its objectives, actions, and direction for its first five years as an organisation.

CHiAPRT will utilise the findings from the impact evaluation to develop a new 5-Year Strategic Plan that will guide the Centre between 2026-2031. In line with its values and goals, this plan will be co-designed with the CHiAPRT Advisory Committee and will be shaped by their strategic guidance.

This next 5-Year Strategic Plan is planned to be released in 2026.

Strategic Outcomes

The Centre for Health in All Policies Research Translation continues to be jointly administered by Health Translation SA (HTSA), SAHMRI and the University of Adelaide School of Public Health. The past few years has seen the Centre transition from a flagship programme to an affiliated centre of HTSA and a key part of the School of Public Health.

The Centre works to strengthen the capacity for research translation across diverse public policy fields, such as housing, environment, employment, food, social support, and the built environment, otherwise known as the underlying determinants of health, wellbeing, and equity.

Commonly, this work can be categorised as having an underlying thread of **research translation** or supporting action on the **social determinants of health**.

Aim

The Centre for Health in All Policies Research Translation aims to promote positive public policy and societal outcomes by advocating for multisectoral action (especially Health in All Policies) and building capacity for the translation of research into policy and practice.

It aims to do this through strengthening research-policy practice, building capacity, and fostering collaborative action locally, nationally, and internationally.

Vision

Collaborative, multisectoral policy approaches are recognised by the research community and the public sector as an essential approach to enable delivery of healthy public policy and equitable health and wellbeing outcomes.

Strategic Objectives

1

Generate and synthesise knowledge on Research – Policy Translation relevant to public policy

2

Translate knowledge and evidence on determinants of health, wellbeing and equity into policy and practice

3

Build capability for Research – Policy collaboration, and action on determinants of health and health equity, within the research and policy making communities

4

Establish and maintain partnerships between academic, policy, and practice communities

5

Promote emerging social and health issues onto the policy and research agenda

Research Translation

Research translation is a continuous, dynamic process that hinges on a strong, trusting relationship between researchers and policy actors. Building collaborative, reciprocal partnerships enables the co-design of research projects that tackle policy-relevant questions. This approach requires sustained collaboration among researchers, policymakers, and practitioners, ideally with support from boundary-spanning individuals or organisations who facilitate these partnerships.

As a core objective of CHiAPRT, the Centre takes an active role in advancing research-to-policy translation.

The HEAL Network

The HEAL Network is a joint collective of 100 investigators and over 30 organisations from across Australia. This collective includes academics, researchers, and policy actors from universities, government, health, and environmental authorities, health sector organisations, Indigenous organisations, and data providers.

The HEAL Network focuses on bridging the gap between knowledge and action by integrating Aboriginal and Torres Strait Islander wisdom, sustainable development, epidemiology, and data science to address environmental and climate change impacts on health.

CHiAPRT has a longstanding relationship with the HEAL Network, bringing a focus on the strategies required to translate evidence generated by the HEAL Network to policy, practice, and on the ground impact. To this end, CHiAPRT representatives serve on the HEAL Leadership Committee and the Independent Advisory Board, as well as convening the HEAL Research Translation Implementation Standing Committee.

[The HEAL Network](#)



Objective 3

Objective 4

2025 Future Leaders School

2025 was the second year of the HEAL Future Leaders School, a week long intensive course aimed at early and mid-career researchers held by the HEAL Global Research Centre. The CHiAPRT team contributed to the development of the Future Leaders School curriculum and help deliver the course as part of the faculty each year.

This year, the programme was held on May 19 - 23 in Canberra, and featured a range of panels, presentations, discussions, and activities to develop participants' skills and capabilities. The CHiAPRT team led sessions on knowledge translation and the policy cycle.



*2025 HEAL Future
Leaders School
Attendees and Faculty*

HEAL Network Case Study Compendium

Last year's annual report put forward **Objective 1** **Objective 2** plans to publish a compendium of successful research-to-policy translation case studies from across the HEAL Network.

In February, CHiAPRT published the **Research to Policy Best Practice | A Case Study Compendium** to celebrate the achievements of researchers who have successfully

integrated HEAL's research-to-policy principles (as established and outlined in the HEAL Network Research-Policy Implementation Strategy) into their work. This resource is now publicly available on the CHiAPRT website, and should prove to be a useful resource for research translation practitioners looking for best-practice examples.



HEAL Research to Policy Best Practice | Case Study Compendium

[Read it here!](#)

Case Studies

HEAL Communities of Practice – supporting policy change by researching the health impacts of wood heater smoke

Understanding bushfire risk perception, preparedness, and the health drivers of intention to leave in Tasmania, Australia

Investigating movement networks of wildlife reservoirs of infection to improve Australia Biosecurity risk assessment and preparedness to emerging infectious diseases

Healing Country on Whadjuk Noongar Boodja: Weaving knowledge systems to meet climate challenges

Working with industry to prevent and mitigate antimicrobial resistance (AMR)

The Australian Environmental Health (AusEnHealth) Project

Assessing climate change, mortality, urban heat island and greening adaptations using CARDAT (the Clean Air Research Data and Analysis Technology) platform for national climate change and health impact assessments

Objective 1 HEAL Network Analysis

To support the ongoing success and sustainability of the HEAL Network, CHiAPRT conducted a network analysis project that maps research translation and interdisciplinary collaboration across the HEAL Network. Data analysis consisted of a descriptive analysis, a social network analysis, and qualitative data analysis, which were used to identify common barriers to collaboration and facilitators that can enhance research translation and foster interdisciplinary collaboration within the Network.

FAME Sustainability Grant

FAME Sustainability Grant January 2024 – June 2025

Objective 1

Objective 4

From Cost to Value: Novel Decision-Making Tools for Harnessing Sustainable Economic Benefits of Trees and Greenspaces in Urban Planning

Local Government Partners: City of Unley and City of Salisbury

CHiAPRT continued to work on the University of Adelaide's FAME Sustainability Grant to investigate the economic benefits of urban greening in Adelaide and develop a range of resources to assist urban planners when designing and implementing urban greening. This project concluded in June 2025.

Using participatory action research as its primary methodology, the FAME Sustainability Grant project was codesigned with policy actors and decisionmakers from the partner councils in a multistage engagement process.

This project yielded meaningful findings on the economic value of street trees in the Cities of Salisbury and Unley. Close collaboration between partner councils and the research team built a strong level of trust and shared understanding that led to the development of actionable strategies with real-world impact and relevance.

[Executive Summary](#)

[Grant Report](#)

[Policy Brief](#)

Key Findings

Objective 2

Objective 4

Place-based relevance of practical tools

Participating councils represented unique socioeconomic, cultural and geographic profiles. Recognising and valuing these differences was essential in shaping an adaptable and context-sensitive economic model for urban greening.

Value of co-design and collaborative relationships

Effective collaboration was achieved when researchers and council members met face-to-face to listen, share and co-design solutions. Grounded dialogue was critical in translating research into actionable strategies with real-world impact.

Greenspace and health as shared priorities

The important link between green infrastructure and public health consistently emerged as a shared priority between stakeholders. This highlighted the significance of including health considerations in urban planning and budget decisions.

Greenspace Decision-making Tool Prototype

Objective 3

In addition to these resources, a novel Greenspace Decision-making Tool prototype has been developed by the research team, with guidance from Dr. John Kandulu of Flinders University.

Developed using findings from the project, the tool will allow decision-makers to model different tree planting scenarios across a given length of time and calculate the monetary value of health and environmental benefits, as well as the upfront and ongoing costs. This will support them to translate their ideas into actualised concepts that have genuine relevance and benefits for communities.

Preventive Health SA

This year, CHiAPRT has been working closely with Preventive Health SA to deliver **From Mandate to Action: Mechanisms for Embedding Preventive Health Advice Across Government Sectors**. This report outlined the history of Multisectoral Action (MSA) for health within South Australia and set out to investigate how MSA mechanisms are being implemented in eight countries: Thailand, Wales, Canada, New Zealand, Sweden, Austria, Switzerland, and Tonga.

The report drew on MSA experiences (including Health in All Policies approaches), and also explored other MSA approaches, such as Impact Assessments.

Examining experiences of and lessons from MSA practice in other jurisdictions can provide valuable insight into what legislative functions for providing health advice across sectors have been successful and potentially be worth considering for implementation within South Australia.



Government of South Australia

Preventive Health SA

Key Findings

Findings from the report were grouped into three key themes that each reflected a key element of effective MSA implementation.

Theme 1: Institutional Structure and Governance Mechanisms

A recurring theme was the value of a **legal or policy mandate** that compels whole-of-government action on preventive health. Across the reviewed jurisdictions, several **practical mechanisms** have been used to ensure that preventive health advice reaches government sectors beyond health.

Theme 2: Planning, Budgeting, and Accountability Systems

Embedding prevention and health equity considerations into **government-wide plans**, policy templates, and budget submissions is critical. A **comprehensive monitoring** system should be developed alongside planning efforts to track progress against agreed indicators, and **publicly reporting** on progress enhances transparency and peer accountability.

Theme 3: Enablers: Funding, Capacity, and Awareness

Clearly established funding (and other resource) mechanisms can drive **cross-sector innovation**. Across a diverse range of policies and projects, **awareness and capacity development** can be facilitated through jointly funded and integrated positions in key (both health and non-health) roles.

Office for Ageing Well

CHiAPRT and Office for Ageing Well (OfAW) have a longstanding history of collaboration, and this has continued into 2025.

Objective 3

OfAW offers a range of different grants each year focused on supporting South Australians to live and age well through community projects, research, and other grant-related projects. CHiAPRT was instrumental in the development of the OfAW Impact Research Grants for Ageing Well, and the Centre supports the recipients of this grant by providing bespoke research translation workshops and advice.

Additionally, plans are underway to develop a 2026 ageing well symposium, jointly hosted by CHiAPRT and OfAW, which is uniquely poised to highlight and promote emerging achievements and developments, both in the ageing well sphere and externally.

2025 Advertisement for Ageing Well Community and Research Grants



Health Promotion Journal of Australia (HPJA)

CHiAPRT Director Carmel Williams is Editor-in-Chief of the HPJA, which works to improve knowledge on matters of health promotion and the social determinants of health.

Objective 3

Research to Policy Translation Manuscript

Much of the research published in the HPJA relates to how findings can be put into practice to improve health outcomes at a population level, and research translation stands as a foundational pillar of the journal.

To this end, CHiAPRT staff have assisted in the development of a new manuscript format for the journal: the **Research Policy Translation** manuscript.

Having a specific manuscript format will allow for faster, easier access for those looking for findings on research-to-policy translation, allowing future researchers to observe what strategies have worked previously in different contexts.

Objective 5

Special Issue

IHPJA recently published a special issue entitled **Health Promotion in the Asia Pacific: Celebrating Success Stories and Tackling Challenges**. This issue highlights successful examples of health promotion practice using a range of approaches from across the Asia Pacific region.

[Access the Special Issue!](#)

Research Policy Partnerships Masterclass



2025 Masterclass Participants

August saw the fifth iteration of **Objective 3** **Objective 4** CHIAPRT's annual Research-Policy Partnerships Masterclass, attended by more than thirty researchers, academics, and policy makers.

A highly regarded course, each year, the masterclass imbues participants with valuable skills for research-to-policy translation through an interactive three-day program filled with activities, workshops, and presentations.

In response to requests from participants and community members, CHIAPRT has developed a complementary online course for the international audience, with plans to release the course in early 2026.

2026 Expressions of Interest

Course Faculty

- **A/ Prof. Carmel Williams** | CHIAPRT [Facilitator]
- **Prof. Adam Graycar** | University of Adelaide
- **A/ Prof. Jaklin Elliott** | University of Adelaide
- **Dr. Tahna Pettman** | CSI, Flinders University
- **Prof. Jacqueline Bowden** | NCETA, Flinders University
- **A/ Prof. Toby Freeman** | University of Adelaide



Guest Speakers

- **Dr. Rebecca Tooher** | South Australian Council of Social Service
- **Nathan Harrison** | Flinders University
- **Michelle Crisp** | Office for Recreation, Sport and Racing
- **Kathy Williams** | Office for Ageing Well
- **Deborah Wildgoose** | Department for Education, SA
- **Dr. Scott Hansen-Easey** | University of Adelaide
- **Dr. Yonatal Tefera** | CHIAPRT

2025 Masterclass Testimonies

Policy Perspective

“There is often a disconnect and a divide between policy makers and researchers. The Policy Masterclass bridges that gap. Both disciplines are critically important but as a policy maker I came away with a greater understanding of the drivers of researchers, and more so a new appreciation of the potential synchronicity that can happen when policy makers and researchers work together for the greater good.

I am already recommending the Masterclass to my network of State Govt colleagues and friends and it's a shame its only offered once a year!”

Kylie Baynes
Principal Policy Officer
Road Safety Policy - Department of
Infrastructure and Transport



Research Perspective

“I attended the Research-Policy-Practice ChiAPRT Masterclass in August 2025.

The day was well organised and flowed smoothly, carefully weaving in moments of reflection and discussion. I appreciated the opportunities to network with likeminded researchers and policymakers in several fields of practice and hear from leading experts on policy making and knowledge translation. I enjoyed the interactive sessions most, especially the ‘Negotiating across boundaries for impact’ role play activity. I remember feeling challenged and inspired and already drawing on some of the skills I had learnt the day before.

Carmel’s engaging and natural teaching style was a clear highlight. She facilitated networking opportunities, stimulated strong discussion, and guided us in building tools and skills that were directly relevant to our work. It is undoubtedly her experience and presence in the field that attracts such great guest lecturers and attendees.

I highly recommend the course to both researchers and policy makers, at any point in their career. You will make many valuable connections and walk away with a refreshed and practical sense of how to integrate policy partnerships into your research and vice versa.”

Kitty Pham
Lecturer - University of Adelaide
Research Associate - University of
South Australia

NGO Perspective

“As a leader in a non-government organisation, what stood out to me about the ChiAPRT Research-Policy Partnerships Masterclass was its practical focus —it equips you with frameworks, tools and real case examples that can help you navigate the policy environment more effectively.

Whether you’re trying to influence government priorities, build coalitions, or embed research into program design, this course helps bridge that gap between good evidence and good policy. The ability to engage directly with researchers, policymakers and other leaders across health and prevention was a real asset. I would highly recommend it to anyone who wants to elevate the strategic impact of their work.”

Laurianne Reinsborough
Executive Manager – Education and Health
Promotion, SHINE SA
Board Director, Australian Health
Promotion Association



Research-Policy Translation Community of Practice

The Research-Policy Translation Community of Practice, launched in November 2023, provides the opportunity and space for researchers, policy actors, and practitioners across sectors and disciplines to develop collaborative partnerships that promote timely and effective integration of evidence into policy and practice.

Objective 3

Objective 4

Objective 5

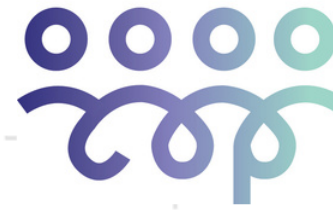
The CoP provides members with opportunities to:

- Make connections with colleagues with related interests and expertise,
- Collaborate at all stages of the research-policy-practice process, and,
- Develop research translation knowledge and skills.

[Case Studies & Other Resources](#)

[CoP Position Statement](#)

[CoP LinkedIn](#)



Community of Practice
Research-Policy
Translation

Translating research for local impact

February 24

The first Community of Practice meeting of 2025 focused on place-based policy and practice, with an overarching theme of *'translating research for local impact'*.

Presentations

Co-facilitator [Dr. Helen Dinmore](#) was joined by [A/Prof Damian Madigan](#), [A/Prof Sunny Son](#), and [Prof Carol Kulik](#), each of whom shared unique and varied perspectives from their work surrounding place-based policy.

Key Findings

- A place-based policy approach is crucial for responding to the root of the Australian housing crisis systematically and effectively.
- Quality public spaces are vital indicators of a population's health and wellbeing.
- Initiatives can, and should, think outside the box - don't always approach the same issue the same way.

Boundary Spanning

May 26

For May's CoP Meeting, CHIAPRT had the privilege of hosting **Dr. Chris Cvitanovic**, a transdisciplinary marine scientist working to improve the relationship between science, policy, and practice.

This session included a presentation on improving knowledge exchange at the interface of science, policy, and practice, building off Chris Cvitanovic's extensive and highly practical published work in the fields of knowledge exchange, stakeholder engagement, boundary spanning, and marine governance.



Boundary Spanning Statement of Value Factsheet

Following the Community of Practice meeting, insights and findings were collated into a useful factsheet, available from the CHIAPRT website.

Statement of Value



From left: Dr. Chris Cvitanovic, A/ Prof. Carmel Williams, and Dr. Yonatal Tefera

Panel Discussion

Additionally, the May Community of Practice session featured a panel discussion with leading professionals working at the interface of research and government. This included **Dr. Chris Cvitanovic, Ben Willsmore, Alison Collins, and Lucinda Ward.**

Key Findings

- Boundary spanning is crucial to span organisational or foundational divides.
- Collaboration is vital at all stages of a project, and initiating, developing, and maintaining relationships is a core element of this process.
- Boundary spanning can (and should) occur at both an individual and organisational level.
- Boundary spanning doesn't always have to be a formal process - it can be as simple as a small shift in mindset or behaviour.

ORSR Sport Voucher Program

August 12

For the third Community of Practice meeting, held in August, **Michelle Crisp** from the South Australian Office for Sport and Racing (ORSR), and **Catherine Simpson** from UniSA showcased the ORSR Sport Voucher Program.

Their presentation highlighted how ORSR, the Department for Education, UniSA researchers, and other stakeholders were able to collaborate to successfully deliver the program, which provides all children in South Australia with \$200 worth of vouchers which can be used for sport, dance, music, or swimming lessons.

SV Case Study

Key Findings

- Informal relationship building (e.g. coffee chats) were crucial in building trust.
- Keeping stakeholder needs and goals at the centre of research assures it is aligned to their needs.
- Research-policy translation isn't always easy – patience and tenacity are key.

Going forward, the Centre aims to publish a series of case studies from Community of Practice meetings, creating a repository of useful resources for research-policy translation practitioners.

CHiAPRT FAME Showcase

November 19

For the final Community of Practice meeting of the year, CHiAPRT showcased some of its own work with the FAME Grant.

CHiAPRT's **Mija Coad** and **Jacquelyn Fyfe** outlined the project with a specific focus on the co-design and collaborative aspects, before facilitating a panel discussion with members of the research team, **A/ Prof. Carmel Williams** and **Dr. John Kandulu**.

Key Findings

- Trust takes time to build – persistence and consistent communication are vital.
- Adaptability is essential for meeting stakeholder needs and involving them early helps avoid rework later.
- Authenticity matters - meetings and interactions should be relational, not transactional.

November
Community of
Practice meeting
attendees



In Conversation Roundtable

In Conversation: Boundary Spanners, **Objective 4** **Objective 5**
Thinkers and Policy Actors is CHiAPRT's ongoing series of roundtable discussions in which researchers, policymakers, and experts from a range of disciplines come together to showcase new and upcoming research, discuss emerging issues, and generate potential solutions.

[YouTube](#)

[CHiAPRT Website](#)

ICRT 8 - Public Interest Journalism

In contrast to traditional commercial journalism, public interest journalism is primarily motivated by the greater public good, and contributes to a reliable news environment that can amplify the voices of those with less societal power.

[Read the Article!](#)

The eighth roundtable in the series, entitled 'Protecting Public Interest Journalism as a Public Health Good' was held in May. A collaboration between CHiAPRT and Croakey Health Media, the discussion brought together the following leaders in the domain of public interest journalism to discuss current challenges faced by the field:

- **Melissa Sweet** | Croakey Health Media
- **Dr. Norman Swan** | Australian Broadcasting Corporation
- **Bronwyn Fredericks** | University of Queensland
- **Alex Cramb** | Public Interest Journalism Initiative

ICRT 9 - Challenging Economic Assumptions

In October, the Centre facilitated a somewhat unique entry in the series, with the ninth roundtable focussing on the *Challenging Economic Assumptions* podcast. As the podcast is usually prerecorded, using the ICRT platform to present a live version of the show gave regular listeners a unique opportunity to interact with, and pose questions directly to, panelists. Usual host Carmel Williams was joined by guest panelists:

- **Prof. Gerry McCartney** | University of Glasgow
- **Mohsen Javdani** | Simon Fraser University
- **Martin Hensher** | Menzies Institute for Medical Research
- **Sarah McKinley** | Freelance Community Wealth Builder

Social Determinants of Health

The social determinants of health are complex, multi-faceted factors that influence all aspects of health and well-being. Developing collaborative, multisectoral approaches that are cognisant of these factors and are responsive to the unique challenges associated with the social determinants of health is vital for enabling the delivery of healthy public policy and equitable health outcomes.

As a core objective of CHIAPRT, the Centre takes an active role in promoting and advocating for positive societal outcomes through fostering collaborative action and capacity building.

Green Equity

Green equity: Improving quality greenspace access in local government communities

Objective 2

Objective 4

From Published Evidence to Collaborative Action

Partners and Participants: City of Salisbury, City of Marion, City of Port Adelaide Enfield, City of Onkaparinga, City of Charles Sturt, Green Adelaide, Department of Housing and Urban Development, Institute of Public Works Engineering Australasia, Heart Foundation, Australian Institute of Landscape Architects, The University of Adelaide – Environment Institute

In 2025, the Centre partnered with Preventive Health SA for a new project on green equity.

Though the benefits of regular greenspace access are well known, urban greenspaces are not distributed equally within Australian cities, a disparity that is particularly pronounced in areas of Adelaide with a high proportion of families living on low incomes.



Green Equity workshop sessions

Green Equity: Mapping for Action

In order to understand the underlying drivers of inequitable greenspace access, CHiAPRT worked closely with local government and industry stakeholders to hone the project and establish actionable findings to make access to greenspace more equitable throughout Adelaide.

In the initial stage of the project, participants discussed how greenspace is defined, and established notions of greenspace quality, a complex concept which can lead to different interpretations between key stakeholders — making addressing the issue of green equity more challenging.

In 2026, the project will progress to translate findings from 2025 into strategies that will enable partners to map and document green equity across their local area. CHiAPRT also aims to engage additional government and industry partners, as well as the voices of community members, as this will provide new perspectives and on-the-ground relevance.

Co-designed Definitions

Greenspaces are living places that include public and private landscapes encompassing diverse forms of cultivated, designed or natural environments. The purpose of greenspace is to support ecological and societal health and wellbeing.

Green equity is defined as inclusive access to quality greenspaces that provide diverse benefits, are appropriate for local conditions, and address community needs.

The Loneliness Project - Spark Initiative

CHiAPRT has been a project partner for **The Loneliness Project** since its inception in October 2022. In 2024, the Loneliness Project lead into the launch of **Spark**, an initiative codesigned by researchers and community members to address loneliness and ignite human connection. **Objective 4**

In 2025, Spark received a significant funding grant from the National Health and Medical Research Council (NHMRC) to expand its work tackling loneliness and fostering stronger, more connected communities. Spark will work with communities to design and implement new initiatives to create meaningful and sustainable connections.

As part of the new grant, CHiAPRT is supporting Spark to develop a case study that highlights key policy actions for the community sector. This project will provide practical guidance for policymakers and community leaders alike.

Spark *Igniting human connection*

Second Global Status Report of HiAP

In 2018, the Global Network for Health in All Policies and the World Health Organization published the first **Global Status Report on Health in All Policies**. Findings from the report provided critical background information on HiAP and helped to inform the development of the new HiAP 4 Pillars Model that was published by the WHO in 2023. **Objective 1**

The first Global Status Report on Health in All Policies



The Centre, with support from PHSA, has led the development of **second edition of the Global Status Report**, which will examine the current state of Health in All Policies practice, how the field has evolved since 2018, and what makes for effective HiAP implementation.

As of late 2025, data collection for the second Global Status Report has concluded, and data analysis is expected to commence in early 2026 for publication later in the year.

Indigenous Health in All Policies (IHiAP)

CHIAPRT are investigating the utility of multisectoral approaches such as the World Health Organization's HiAP 4 Pillars Model to support Australian governments to work collaboratively across sectors and with Indigenous Nations. IHiAP is a nested project within the broader STAUNCH Indigenous Nation Building Initiative, funded by the HEAL Network Innovation Fund.

Objective 1

Objective 4

CHIAPRT collaborated to produce a rapid **state-of-play review**, an Australian **policy analysis**, and a **roundtable event**.

The **rapid state-of-play review** examined the international academic literature on multisectoral action (MSA) by government to address Indigenous health inequity. The literature base on this topic is in its infancy, however, valuable lessons on using multisectoral approaches to address Indigenous health inequity were identified.

A **desktop analysis of the Australian policy landscape** was undertaken to find evidence of MSA. Using publicly available government policy documents, two key findings were observed;

- The health, environment, and Aboriginal affairs sectors are talking about MSA, presenting it as a valuable way to address complex societal issues
- A desktop analysis alone is not sufficient to understand the implementation of MSA within government. Therefore, further qualitative investigations are required.

CHIAPRT and STAUNCH hosted a **roundtable of Indigenous Nation leaders, academics, and policy makers** to discuss the utility of a framework which would guide Australian governments to work across sectors and in partnership with Indigenous Nations. The event facilitated important conversations, and highlighted the importance of working at three levels of governance:

- **Intra-Nation Governance:** The protocols and governance procedures within Indigenous Nations
- **Inter-governmental Relations:** The relationships between Indigenous Nations and Australian governments
- **Multisectoral Government Action:** The willingness and ability of government to work collaboratively across sectors



Figure 1: STAUNCH Framework

Key Findings

While the IHiAP project is still in its infancy, some key findings have already become apparent:

- Literature tells us a 'By Indigenous, for Indigenous' approach is needed, and strategies must be centered on **Indigenous ways of knowing, being and doing**.
- Collaboration must occur **within and between Indigenous Nations**, as well as **between government sectors**.

CHIAPRT looks forward to continuing to work with STAUNCH over the remaining four years of the project.

WHO Collaborations

CHiAPRT is an internationally active organisation, and as such, is a frequent collaborator with the World Health Organization.

Governance and Health Equity

In May of 2025, the World Health Organization published its **World report on social determinants of health equity**. This comprehensive report reviewed the progress that has been made on achieving global health equity targets and includes a range of recommendations for achieving these targets.

CHiAPRT has worked with the WHO team to consolidate chapters 6-8 of the report into a concise factsheet, to be released in 2026.

This factsheet unpacks the recommendations and associated sub recommendations for new governance approaches to achieve more equitable health outcomes.



Governance Fact Sheet

[WHO Report](#)

Monitoring intersectorality with a focus on health equity

Throughout the past several years, CHiAPRT has been assisting the Pan American Health Organization (PAHO) with the development of a **Proposal for Monitoring and Evaluation of Intersectoral Action for Health Equity in the Americas**.

Since 2024, Carmel has participated in meetings in Rio de Janeiro and Bogota which brought together experts in a range of different intersectoral fields to conceptualise how best to monitor and evaluate intersectoral action in countries.

Monitoring intersectorality supports the surveillance and promotion of successful changes, the ability to alter and improve the design, implementation, or sustainability of strategies and initiatives, and can have an overall influence on health equity and its impact on health and well-being. A draft report has been created, and work on the project will continue into 2026.

[PAHO](#)



A note on terminology

Different organisations sometimes use different terminology to refer to the same concepts. The PAHO uses **intersectoral action** to describe action across sectors, whereas CHiAPRT uses the term **multisectoral action**.

Challenging Economic Assumptions Podcast

Economic theory underpins the actions of governments and the business community alike. The values, assumptions and models that sit behind economics drive the allocation of budgets, regulatory and tax regimes, and the design of social support systems.

Objective 3

Objective 5

Over the past two years, CHIAPRT has been working with Prof. Gerry McCartney, Professor of Wellbeing Economics at the University of Glasgow, to deliver a series of podcasts known as **Challenging Economic Assumptions**.

Each episode takes a look at prevailing economic assumptions surrounding modern-day social issues through a critical lens, offering insight that goes beyond the widely accepted narratives of the day.

In July, CHIAPRT published an overview on the podcast. This factsheet outlines the background of the project, aims and objectives, an overview of episodes, and future plans for the podcast.



[Apple Podcasts](#)

[YouTube](#)

[Spotify](#)

[CEA Factsheet](#)

Nicki Hutley | Evolution of Economic Perspectives within Governments

January 13

In the first episode of the year, Gerry spoke to Nicki Hutley, a highly experienced economist, on the evolution of economic thinking specific to climate policy and cost-benefit analysis. They discuss the realities and limitations of economic definitions, along with the efforts required to compliment government processes whilst trying to consult on climate policy.

[Episode 6](#)

CEA
Spotify
Page



2025 Episodes

Prof. Lynne Chester | Questioning Conventional Economics in Public Policy

March 19

In March, Carmel and Gerry spoke to Professor Lynne Chester, a leading Australian economic scholar, about the pervasive influence of conventional economics on public policy, particularly in areas such as healthcare and energy. In their discussion, they critique the assumptions of rationality and market efficiency that underpin many economic policies, arguing that they often neglect the complexities of human behaviour and the diverse needs of society.

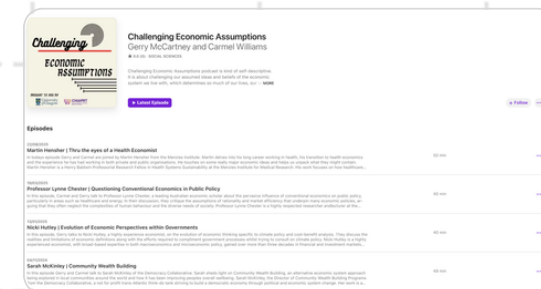
[Episode 7](#)

Martin Hensher | Thru the eyes of a Health Economist

August 22

In August, Gerry and Carmel were joined by Martin Hensher from the Menzies Institute. Martin reflects on his long career working in health, his transition to health economics, and the experience he has had working in both the public and private sector. He also touches on some of the major economic ideas and helps us unpack what they might contain.

[Episode 8](#)



CEA Apple Podcasts Page

CHiAPRT

Outputs

Committed to fostering skill and knowledge development, CHiAPRT engages with the broader community through a variety of communication platforms, elevates topical issues and develops relationships through conferences and events, and produces resources and publications that contribute to broader health and wellbeing discussions and research-to-policy translation practices.

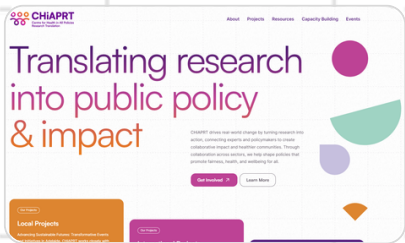
CHiAPRT Communications

Website

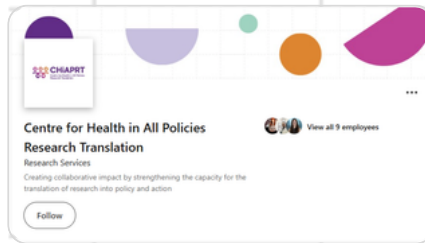
Objective 5

Objective 4

Established in late 2024, the CHiAPRT website continues to be updated regularly. The site showcases current and ongoing projects, publications and other resources, as well as upcoming events. Access it now to stay up to date with CHiAPRT!



CHiAPRT Website



CHiAPRT LinkedIn

LinkedIn

CHiAPRT's LinkedIn account has seen further increases in impressions and engagement throughout 2025, growing to over 1000 followers at the end of the year.

The LinkedIn page continues to be a key platform to showcase updates to ongoing projects, promote upcoming events, and share publications and other outputs.

FigShare

Created in 2025, CHiAPRT's FigShare provides a record of all of CHiAPRT's official documents and products and is regularly updated.

YouTube

CHiAPRT maintains a YouTube page for sharing online webinars and presentations, with specific attention given to the In Conversation Round Table and Challenging Economic Podcast series.

Spotify + Apple Podcasts

The Challenging Economic Assumptions podcast (hosted by Carmel Williams and Gerry McCartney) began in 2024, with episodes being released regularly throughout 2025 on Spotify and Apple Podcasts.

[Website](#)

[LinkedIn](#)

[FigShare](#)

[YouTube](#)

[Apple Podcast](#)

[Spotify](#)

Conferences & Presentations

Queensland Branch Annual Meeting

Australian Health Promotion Association
19 February

Introducing CHiAPRT, Health in All Policies, and the 4 Pillars Model

Student and Early Career Practitioner Committee

Australian Health Promotion Association
16 April

How to Write a Great Health Policy Brief

Tampere Talk Series

Tampere University
28 April

Working Across Sectors for Health and Equity: Exploring the role of trust and boundary spanning

Preventive Health Conference

Public Health Association of Australia
28-30 April

Seizing the Policy Window: How Australia Banned Engineered Stone

Preventive Health SA Gathering

Preventive Health SA
15 July

From Mandate to Action: Mechanisms for Embedding Preventive Health Advice Across Sectors

Objective 5

CHiAPRT staff have made frequent appearances at a number of conferences throughout 2025.

Preventive Health SA

16 October

Equitable Access to Quality Greenspace: a Project Overview

Wellbeing Hubs

Public Health Association of Australia SA Branch

24 October

Building Healthy Public Policy in the 21st Century: Taking a systems and structural approach to working across sectors

SA Population Health Conference

Healthy Environments and Lives Network

3-6 November

Why Evidence Alone Doesn't Drive Policy: The Case of Australia's Engineered Stone Ban

From Crisis Response to Embedded Governance: Sustaining Health and Equity Through Collaboration (SA Hub)

5th International HEAL Conference

South Australian Health and Medical Research Institute

2 December

The Centre for Health in All Policies Research Translation: An Overview

Flagship Focus #3

University of Adelaide Environment Institute

3-4 December

Developing Health-Based Green Policy

International Symposium on Green Urban Futures

Publications

Health Promotion and the Importance of Translating Research Into Policy, Practice and Societal Impact

Carmel Williams, Nadia Wei Ee Lai, Yonatal Tefera, Tahna Pettman, Louise Baldwin

05/02/2025

Health Promotion
Journal of
Australia

[Access here!](#)

A precautionary approach to social media: protecting young minds in an evolving digital world

Ivana Stankov, Yonatal Tefera, Melissa Bradley, Alison Pickering, Emma Willoughby, Carmel Williams

14/07/2025

Medical
Journal of
Australia

[Access here!](#)

WHO Cares?!?: Prioritising Health Promotion for Global Health Equity Advancement

James A Smith, Carmel Williams, Louise Baldwin, Louise Potvin, Glen Ramos, Sione Tu'itahi, Leanne Eruera, Nadia Mastersson, Anna Peeters, Evelyne de Leeuw, Le Smith, David Lloyd, Fran Baum, Gemma Crawford

12/08/2025

Health Promotion
Journal of
Australia

[Access here!](#)

Future of Health Promotion in the Asia-Pacific Region in an Era of Global Disruption: An Interview With Dr. Sandro Demaio

Carmel Williams, Louise Baldwin

09/09/2025

Health Promotion
Journal of
Australia

[Access here!](#)

Health Promotion in the Asia Pacific: Celebrating Success Stories and Tackling Challenges

Carmel Williams, Louise Signal, Louise Baldwin, Vivian Lin

18/09/2025

Health Promotion
Journal of
Australia

[Access here!](#)

Children's Health and Environmental Sustainability: A Call for Collaboration.

Clare Hume, Adriana Milazzo, Carmel Williams

25/09/2025

Health Promotion
Journal of
Australia

[Access here!](#)

Protecting public interest journalism as a public health good

Bronwyn Fredericks, Neha Lalchandani, Melissa A Sweet, Alex Cramb, Carmel Williams

21/10/2025

Medical
Journal of
Australia

[Access here!](#)

Circumventing the Politics of Water to Achieve Equitable and Sustainable Access in Australia

Neha Lalchandani, David Cunliffe, Tom Mollenkopf, Sarah Ransom, Karen Rouse, Clare Murphy, Mija Coad, Carmel Williams

27/10/2025

World Water
Policy

[Access here!](#)

Overlooked considerations in prescribing green and blue infrastructure solutions for urban environments

Prashant Kumar, Karina Corada Perez, Akash Biswal ... Chang Xi, Russell Yates, Runming Yao

18/11/2025

The Innovation

[Access here!](#)

Opening the policy window: how Australia banned engineered stone

Yonatal Tefera, Kate Cole, Chandnee Ramkissoon, Dino Pisaniello, Shelley Rowett, Sharyn Gaskin, Mija Coad, Neha Kishan Lalchandani, Carmel Williams

20/11/2025

Public Health
Research &
Practice

[Access here!](#)

Beyond banning: Our digital world must be made safer for young people

Nicholas Carah, Sandro Demaio, Louise Holly, Ilona Kickbusch, Carmel Williams

18/12/2025

Health Promotion
Journal of
Australia

[Access here!](#)

Urban green space provision: the case for policy-based solutions to support human health

Craig Williams, Christie Byrne, Shannon Evenden, Veronica Soebarto, Stefan Caddy-Retalic, Carmel Williams, Yonatal Tefera, Xiaoqi Feng, Andrew Lowe

27/12/2025

Medical
Journal of
Australia

[Access here!](#)

VicHealth Is a Health Promotion Exemplar: Evidence Demands Bolstering Investment (Not Eroding It)

James A. Smith, Rob Moodie, Carmel Williams, Glen Ramos, Katherine Trebeck, Caterina Giorgi, Melinda Edmunds, Gemma Crawford

28/12/2025

Health Promotion
Journal of
Australia

[Access here!](#)

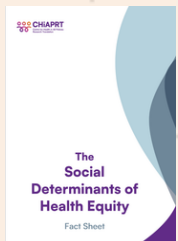
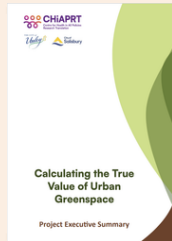
Resources

Through its many projects and events over the years, CHiAPRT has developed a range of capacity building resources and documents. These are the highlights from 2025, but many more can be found on the CHiAPRT website.



Research to Policy Best Practice | A Case Study Compendium

Executive Summary | Calculating the True Value of Urban Greenspace



Social Determinants of Health Equity

Tools

Publications

CHiAPRT Resources

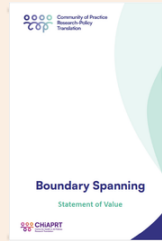


CoP Sports Vouchers Case Study

CoP FAME Economics of Trees Case Study



Boundary Spanning Statement of Value



CHiAPRT Newsletters

December 2024
June 2025
September 2025





The Centre for Health in All Policies Research Translation acknowledges the Kurna people - the traditional custodians of the Adelaide Plains. We recognise and respect their cultural, heritage, beliefs, and relationship with the land. We acknowledge that they are of continuing importance to the Kurna people living today and we pay our respects to their elders past, present, and emerging.